

RGBA DESIGN LTD.

Hong Kong - Manila





RGB A DESIGN LTD

RGB A Design Ltd is a boutique studio specializing in custom Architecture and Interiors for top Hospitality and Private Residential & Commercial Projects.

Founded in 2019, RGB A has a diverse portfolio ranging from 6-star Destination Resorts, Business Hotels, and large- and small-scale Private Residences throughout The Philippines, Thailand, India and other parts of Asia.

RGB A is known for its personalized service and hands-on dedication to each project. Since its formation in early 2020, it has been awarded a large high-end Sustainable Resort in El Nido, Philippines that is currently in its planning stages and the 50 Storey DUSIT Flagship Hotel in Manila.

Currently, RGB A has:

- Won 6 new projects in Cebu, Philippines and have established a name across the hospitality design industry.
- Has been accredited with Mandarin Oriental, Dusit and the Radisson Groups.
- RGB A has also several collaborations with Topo Design Studio Singapore for Maldivian projects since 2021.



ROWENA GUEVARA BERROYA FOUNDER – PARTNER

Rowena is in the Architecture and Hospitality Design Industry for more than 2 decades. She has worked with a well known International Interior Design Company as a Partner (21 years) hence have collaborated with top Operators – Hyatt International, Four Seasons, Shangri-la, Marriott International throughout The Philippines, Hong Kong, China, Japan, Sri Lanka, Malaysia and India.

She has been in charge of all stages from presentation preparation, design concepts, design development to project and team management.

Rowena is a Registered Licensed Architect in the Philippines and is an affiliate member of the Philippine Institute of Architects and United Architects of the Philippines.



FLOYD MILLER ZULUETA DIRECTOR – DESIGN & OPERATIONS

Floyd has been in the Interior Design industry for over 20 years. Starting at top Philippine developers, he has quickly transitioned into overseeing the biggest and tallest mixed-use project, the Grand Hyatt Manila.

He has moved on to various big projects in Clark, Pampanga and all over Metro Manila.

Floyd is a Registered Licensed Architect in the Philippines and is an affiliate member of the Philippine Institute of Architects.

ONGOING PROJECTS

HOTELS

Grand Summit NUSTAR Cebu (Opening 2026)

- 370 keys modern urban resort hotel

Mandarin Oriental Macau GYM Renovation (Opening 2025)

DUSIT Manila, Greenhills, Philippines (Opening 2026) –200 keys modern urban hotel

SOMERSET Gorordo Cebu – All Day Dining/Deli (Opening 2026)

Radisson RED Resort – Mactan – in collaboration with VCA (2027)

MARCO Polo CEBU – Renovation (2027)

Courtyard Marriott Hotel, Navi, India (2023)

RESORTS

Niyama Maldives (2023) – Renovation

Amingiri, Maldives (2022)

Maldives VAADHOO Vegan Wellness Hotel, Maldives (2025)

Fushifaru Maldives (2022) - Renovation

Naisoso Marina Apartments, Fiji (2022) - Renovation

Modala Resort Cliff Villas & Restaurant, Panglao, Bohol, Philippines (2024)

- 16 Sustainable Villas

PRIVATE RESIDENCES & RESTAURANTS

Bunwana Mansion & Spa, Korat, Thailand (2024)

KESTER HAW Condominium, Rockwell, Philippines

3Bedroom Luxury Condo

TONY QUACH Mansion, Fuego, Philippines

5000 M2 Private Residence – Renovation

V HOTEL Renovation, Makati, Philippines

50 Room Business Hotel

ELITE UNION MAIN OFFICES, BGC Philippines

Monocrete Chinese Restaurant, The Upper Deck, Ortigas, Philippines

KASPAR ERNST Private Villas, Phuket, Thailand

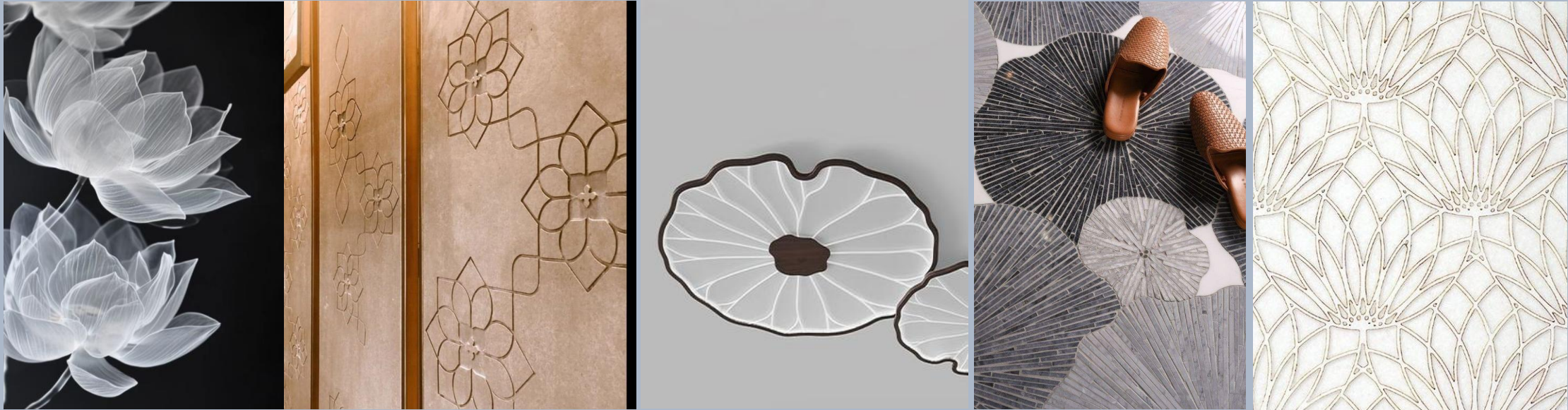
70,000 sq ft Private Residence

Gwandalan House Hotel B&B, Dipolog, Philippines (2022)

<https://www.gwandalanhouse.ph/>

INSPIRATION: BLACK LOTUS – A Symbol STRENGTH, Purity and Renewal

INSPIRATION



The LOTUS commonly serves as a sacred for purity, rebirth, and strength. Because lotuses rise from the mud without stains, they are often viewed as a symbol of purity. Since they return to the murky water each evening and open their blooms at the break of day, lotus flowers are also symbols of strength, resilience, and rebirth. Still another lotus flower meaning is transcendence: the lotus represents the transcending of man's spirit over worldly matter since it blooms from the underworld into the light.



MANDARIN ORIENTAL MACAU

- Gym Renovation
- Lotus Inspired
- Modern Branding



MANDARIN ORIENTAL MACAU

- Gym Renovation
- Lotus Inspired
- Modern Branding



DUSIT GREENHILLS

- 200 KEYS
- 50 storeys
- Tallest Building in Greenhills
- Dusit Thani Luxury Brand



DUSIT GREENHILLS

- 200 KEYS
- 50 storeys
- Tallest Building in Greenhills
- Dusit Thani Luxury Brand

BENJARONG – DINING AREA
20 SEPT 2025



DUSIT GREENHILLS

BENJARONG RESTAURANT

- 200 KEYS
- 50 storeys
- Tallest Building in Greenhills
- Dusit Thani Luxury Brand

BENJARONG – DINING AREA
20 SEPT 2025



DUSIT GREENHILLS

BENJARONG RESTAURANT

- 200 KEYS
- 50 storeys
- Tallest Building in Greenhills
- Dusit Thani Luxury Brand



DUSIT GREENHILLS SKY LOBBY

- 200 KEYS
- 50 storeys
- Tallest Building in Greenhills
- Dusit Thani Luxury Brand



DUSIT GREENHILLS ALL DAY DINING

- 200 KEYS
- 50 storeys
- Tallest Building in Greenhills
- Dusit Thani Luxury Brand

GUESTROOM – TWIN MUR
31 JANUARY 2025



DUSIT GREENHILLS

TYPICAL GUEST ROOM

- 200 KEYS
- 50 storeys
- Tallest Building in Greenhills
- Dusit Thani Luxury Brand

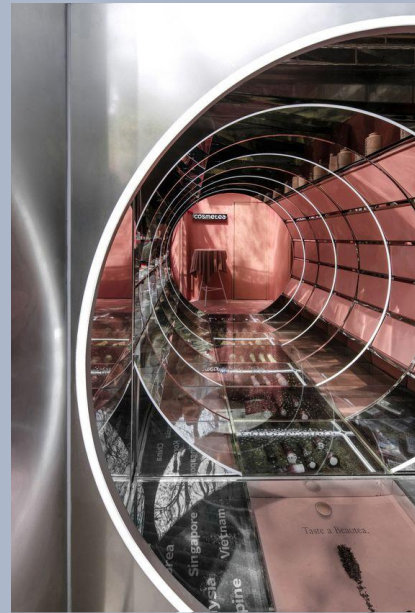


GUESTROOM – KING MUR
31 JANUARY 2025

DUSIT GREENHILLS TYPICAL BATHROOM

- 200 KEYS
- 50 storeys
- Tallest Building in Greenhills
- Dusit Thani Luxury Brand

ICONIC SKYDECK: EXPERIENCE THE JOURNEY OF APEX HEIGHTS



ICONIC SKYDECK NUSTAR GRAND SUMMIT CEBU, PHILIPPINES

- Major Attraction in Cebu
- Futuristic
- Unique Feature



ICONIC SKYDECK NUSTAR GRAND SUMMIT CEBU, PHILIPPINES

- Major Attraction in Cebu
- Futuristic
- Unique Feature



ICONIC SKYDECK NUSTAR GRAND SUMMIT CEBU, PHILIPPINES

- Major Attraction in Cebu
- Futuristic
- Unique Feature



MARCO POLO PLAZA CEBU GRAND LOBBY

- 200 KEYS
- 15 storeys
- Hilltop Property in Cebu
- International Brand for 20 years



MARCO POLO PLAZA CEBU ALL DAY DINING

- 200 KEYS
- 15 storeys
- Hilltop Property in Cebu
- International Brand for 20 years



MARCO POLO PLAZA CEBU

- 200 KEYS
- 15 storeys
- Hilltop Property in Cebu
- International Brand for 20 years



ARTHALAND TEAL SHOWROOM

- Large University Residential Development with 1000 units
- Sustainable
- Unique Feature



ARTHALAND TEAL SHOWROOM

- Large University Residential Development with 1000 units
- Sustainable
- Unique Feature

STUDIO BEDROOM 'SELFIE'



ARTHALAND TEAL SHOWROOM

- Large University Residential Development with 1000 units
- Sustainable
- Unique Feature



ARTHALAND LIV SHOWROOM

- Large University Residential Development with 1000 units
- Sustainable
- Unique Feature



THE KOWLOON HONG KONG MALL

- 18 HECTARES
- Mixed Use
- Retail/Commercial/Hotel
- Residential
- High and Medium Rise
- Young and Artsy



THE KOWLOON HONG KONG MALL

- 18 HECTARES
- Mixed Use
- Retail/Commercial/Hotel
- Residential
- High and Medium Rise
- Young and Artsy





頂級 日本食府

Deluxe Japanese Eatery

全港絕無僅有的大型頂級
Omakase 廚師發辦，主題
區域包括鐵板燒、刺身壽司、
天婦羅、串燒。

Probably the largest in scale Japanese
omakase in town, bringing exquisite
dining experience, encompassing
Tempanyaki, Sushi & Sasimi, Tempura
& Yakitori.

THE KOWLOON HONG KONG MALL

- 18 HECTARES
- Mixed Use
- Retail/Commercial/Hotel
- Residential
- High and Medium Rise
- Young and Artsy





NUSTAR GRAND SUMMIT CEBU, PHILIPPINES

- 370 KEYS
- 20 storeys
- Young and Locally Inspired
- In House Robinsons Premier Brand



NUSTAR GRAND SUMMIT CEBU, PHILIPPINES

- 370 KEYS
- 20 storeys
- Young and Locally Inspired
- In House Robinsons Premier Brand



NUSTAR GRAND SUMMIT CEBU, PHILIPPINES

- 370 KEYS
- 20 storeys
- Young and Locally Inspired
- In House Robinsons Premier Brand



NUSTAR GRAND SUMMIT CEBU, PHILIPPINES

- 370 KEYS
- 20 storeys
- Young and Locally Inspired
- In House Robinsons Premier Brand



PULLMAN MANILA, PHILIPPINES

- 200 KEYS
- 50 storeys
- Tallest Building in Greenhills
- Young and Artsy
- Sky Lobby



PULLMAN MANILA, PHILIPPINES

- 200 KEYS
- 50 storeys
- Tallest Building in Greenhills
- Young and Artsy



PULLMAN MANILA, PHILIPPINES

- 200 KEYS
- 50 storeys
- Tallest Building in Greenhills
- Young and Artsy



MAD COW STEAK HOUSE PULLMAN MANILA

- 200 KEYS
- 50 storeys
- Tallest Building in Greenhills
- Young and Artsy
- In House Accor Brand



FIVE STAR VEGAN WELLNESS RESORT VAADHOO, MALDIVES

- 70 Luxury Villas
- Private Tip Land
- 900 Meters White Sand Beach
- Vegan Living
- Sustainable Design
- Innovative
- Wellness Focused



FIVE STAR VEGAN WELLNESS RESORT VAADHOO, MALDIVES

- 70 Luxury Villas
- Private Tip Land
- 900 Meters White Sand Beach
- Vegan Living
- Sustainable Design
- Innovative
- Wellness Focused



FIVE STAR VEGAN WELLNESS RESORT VAADHOO, MALDIVES

- 70 Luxury Villas
- Private Tip Land
- 900 Meters White Sand Beach
- Vegan Living
- Sustainable Design
- Innovative
- Wellness Focused



FIVE STAR VEGAN WELLNESS RESORT VAADHOO, MALDIVES

- 70 Luxury Villas
- Private Tip Land
- 900 Meters White Sand Beach
- Vegan Living
- Sustainable Design
- Innovative
- Wellness Focused



AURO FARM CACAO RESERVE CALAMBA, PHILIPPINES

- 7 Luxury Villas
- All zero waste Construction
- Organic and Sustainable Materials
- First Bio Pool in the Country
- Cacao Sanctuary



AURO FARM CACAO RESERVE CALAMBA, PHILIPPINES

- 7 Luxury Villas
- All zero waste Construction
- Organic and Sustainable Materials
- First Bio Pool in the Country
- Cacao Sanctuary



AURO FARM CACAO RESERVE

- 7 Luxury Villas
- All zero waste Construction
- Organic and Sustainable Materials
- Bio Pool
- Cacao Sanctuary



AURO FARM CACAO RESERVE CALAMBA, PHILIPPINES

- 7 Luxury Villas
- All zero waste Construction
- Organic and Sustainable Materials
- Bio Pool
- Cacao Sanctuary



COURTYRAD MARRIOTT NAVI, MUMBAI, INDIA

- 105 Guestrooms
- Business Hotel
- 6 Floors of Podium
- Large Ballroom
- Concierge
- Young & Modern Design



COURTYARD MARRIOTT NAVI, MUMBAI, INDIA

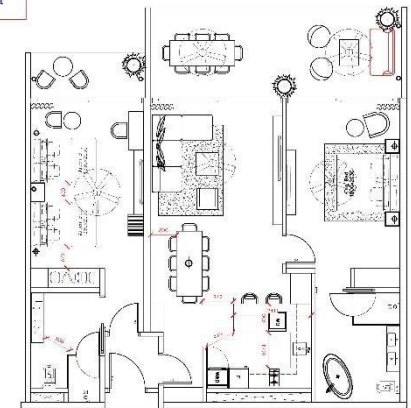
- 105 Guestrooms
- Business Hotel
- 6 Floors of Podium
- Large Ballroom
- Concierge
- Young & Modern Design



NAISOSO MARINA FIJI

- 60 Luxury Apartments & Condominium
- 900 Meters White Sand Beach
- Sustainable Design
- Innovative
- Modern Indigenous

2022-07-29 2BR
Apartment Layout





NAISOSO MARINA FIJI

- 60 Luxury Apartments & Condominium
- 900 Meters White Sand Beach
- Sustainable Design
- Innovative
- Modern Indigenous



ERNST PRIVATE VILLA PHUKET, THAILAND

- 7 Luxury Villas
- Private Land by the sea
- Millionaires' Row
- 36 Meter Pool
- Private Kitchen



ERNST PRIVATE VILLA PHUKET, THAILAND

- 7 Luxury Villas
- Private Land by the sea
- Millionaires' Row
- 36 Meter Pool
- Private Kitchen





ERNST PRIVATE VILLA PHUKET, THAILAND

- 7 Luxury Villas
- Private Land by the sea
- Millionaires' Row
- 36 Meter Pool
- Private Kitchen



ERNST PRIVATE VILLA PHUKET, THAILAND

- 7 Luxury Villas
- Private Land by the sea
- Millionaires' Row
- 36 Meter Pool
- Private Kitchen



FIVE STAR MODALA RESORT PANGLAO, BOHOL, PHILIPPINES

- 20 Luxury Villas
- Private Tip Land
- 800 Meters White Sand Beach
- Marine Sanctuary
- Coral Reserve
- Sustainable Design
- Innovative
- Wellness Focused



**FIVE STAR
MODALA RESORT
PANGLAO,
BOHOL,
PHILIPPINES**

- 20 Luxury Villas
- Private Tip Land
- 800 Meters White Sand Beach
- Marine Sanctuary
- Coral Reserve
- Sustainable Design
- Innovative
- Wellness Focused



FIVE STAR MODALA RESORT PANGLAO, BOHOL, PHILIPPINES

- 20 Luxury Villas
- Private Tip Land
- 800 Meters White Sand Beach
- Marine Sanctuary
- Coral Reserve
- Sustainable Design
- Innovative
- Wellness Focused



FIVE STAR MODALA RESORT PANGLAO, BOHOL, PHILIPPINES

- 20 Luxury Villas
- Private Tip Land
- 800 Meters White Sand Beach
- Marine Sanctuary
- Coral Reserve
- Sustainable Design
- Innovative
- Wellness Focused



KESTER HAW CONDO, ROCKWELL, MANILA

- 3 Bedroom Condominium
- Modern and Masculine
- Prime Residential Development
- High End Luxury

Past Projects with BLD – LEAD DESIGNER

COMPLETED PROJECTS (1998-2020)

HOTELS

Huating Kunlun Hotel Shanghai (renovation),
China

Hyatt Regency, Shipai, China

Courtyard Marriott , Nerul, India

Grand Hyatt Manila, Philippines

Grand Hyatt Manila Extension, Philippines

Grand Hyatt Colombo, Sri Lanka

Four Seasons Mumbai, India

Four Seasons Residences Beijing, China

Four Seasons Serviced Apartments, Hong
Kong

Grand Hyatt Kuala Lumpur, Malaysia

Grand Hyatt Hong Kong

Grand Hyatt Shanghai, China

Grand Hyatt Beijing, China

Grand Hyatt Fukuoka, Japan

Grand Hyatt Melbourne, Australia

Hyatt Regency Pune, India

Hyatt Regency Mumbai, India

Hyatt Regency Delhi, India

Hyatt Regency Manila, Philippines

J Hotel, Shanghai, China

Shangri-La Kowloon, Hong Kong

Shangri-la Pudong Shanghai, China

Ritz-Carlton Bachelor Gulch, Colorado

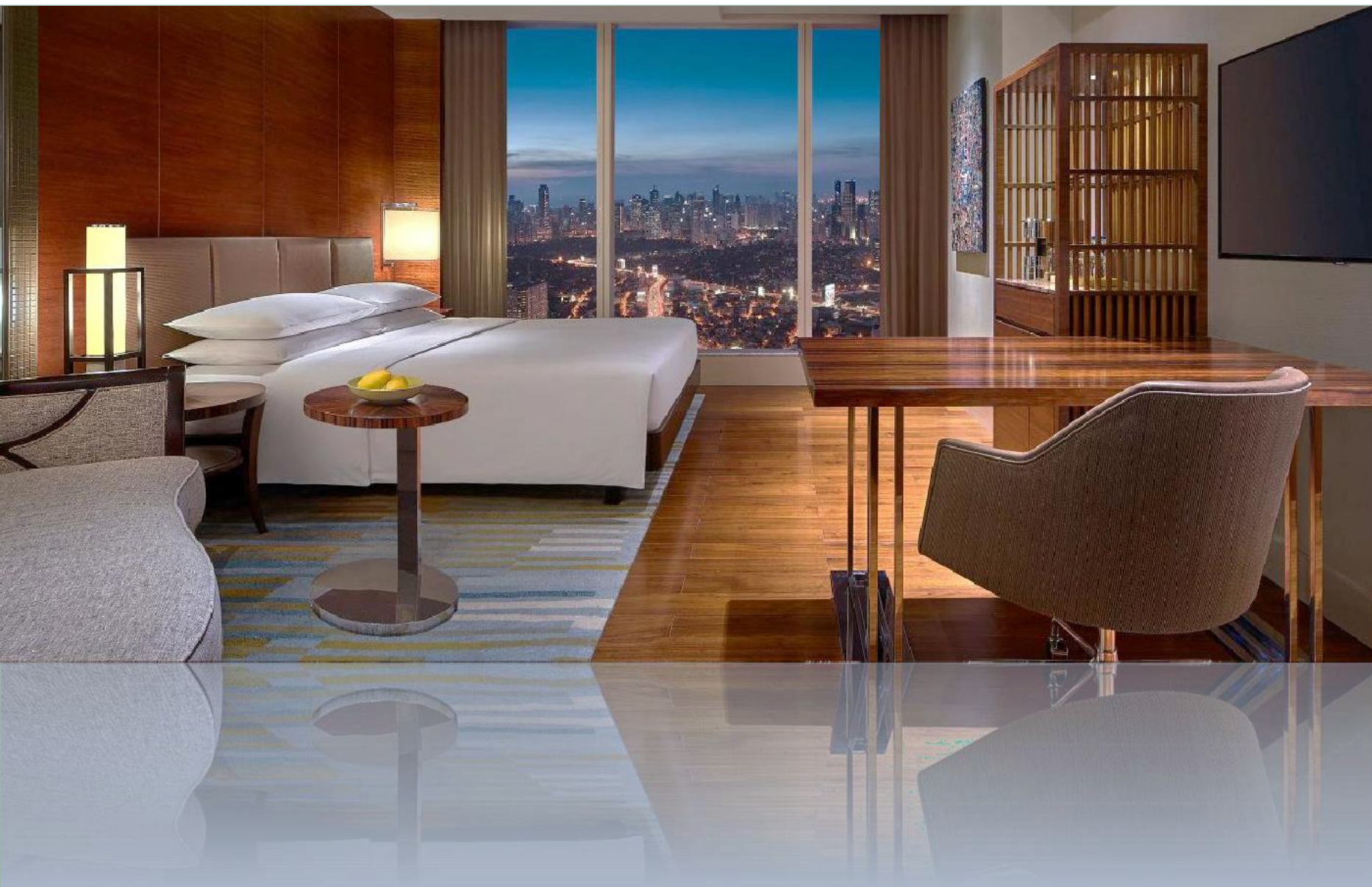
Portman Ritz-Carlton Shanghai

Park Lane, Hong Kong (now Pullman)



GRAND HYATT MANILA PHILIPPINES

- 486 Guestrooms & Suites
- 11-Meter-Tall Lobby
- Tallest Building in the Philippines
- Innovative F&B
- Award Winning Design



GRAND HYATT MANILA PHILIPPINES

- 486 Guestrooms & Suites
- 11-Meter-Tall Lobby
- Tallest Building in the Philippines
- Innovative F&B
- Award Winning Design



GRAND HYATT MANILA PHILIPPINES

- 486 Guestrooms & Suites
- Dormitory Concept
- His and Hers Wet Areas
- Walk in Closet
- Award Winning Design



OSAKA INTERCONTINENTAL

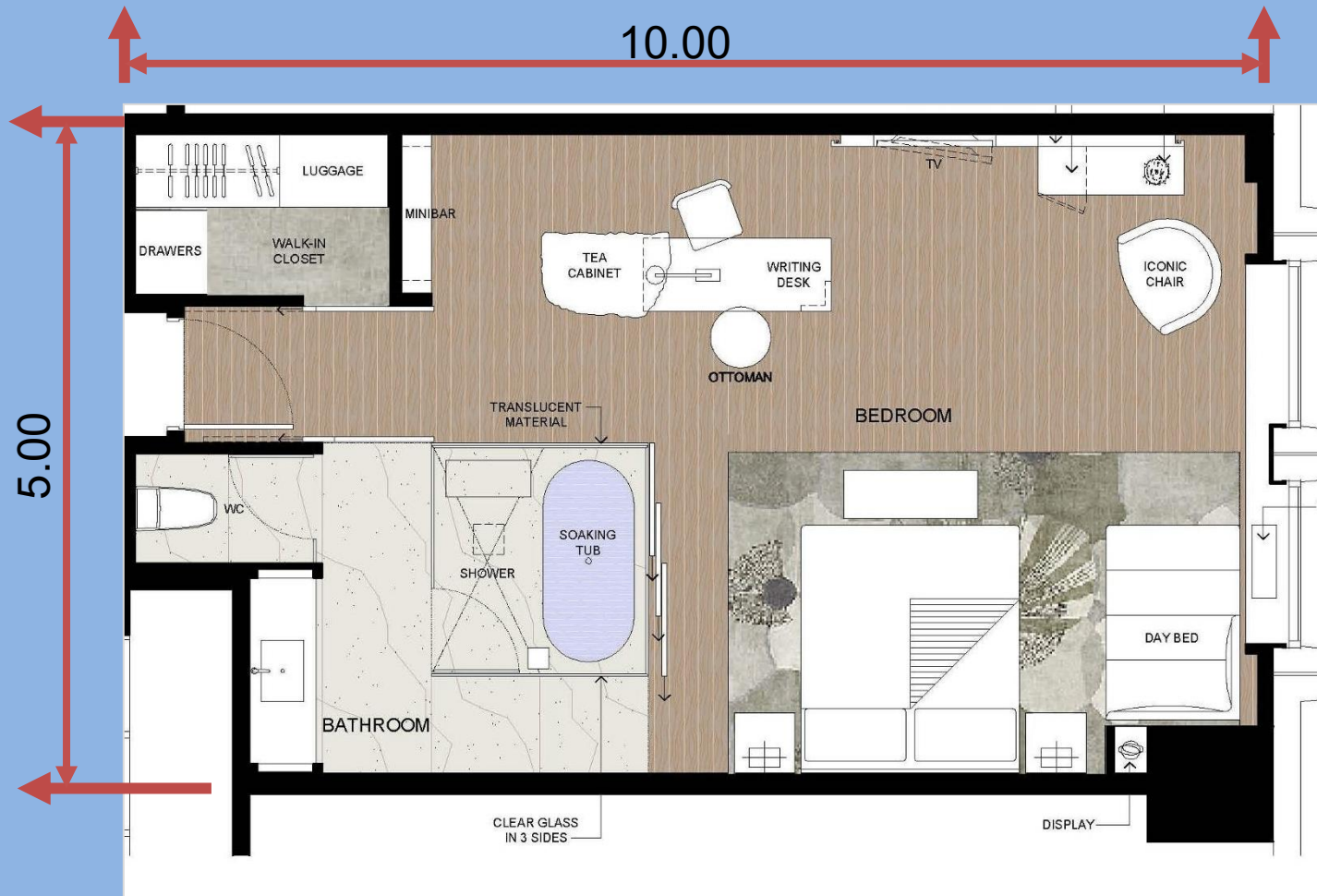
- 200 Guestrooms & Suites
- One of the Largest Rooms in Japan with a minimum of 52 M2 for Standard Guestrooms
- Consistent Award-Winning Design
- Focused on Local Culture & Art Collection



INTERCONTINENTAL
OSAKA

A NEW
PERSPECTIVE
ON LUXURY





OSAKA INTERCONTINENTAL

- 200 Guestrooms & Suites
- One of the Largest Rooms in Japan with a minimum of 52 M2 for Standard Guestrooms
- Consistent Award-Winning Design
- Focused on Local Culture & Art Collection



OSAKA INTERCONTINENTAL

- 200 Guestrooms & Suites
- One of the Largest Rooms in Japan with a minimum of 52 M2 for Standard Guestrooms
- Consistent Award-Winning Design
- Focused on Local Culture & Art Collection



FOUR SEASONS HONG KONG RESIDENCES

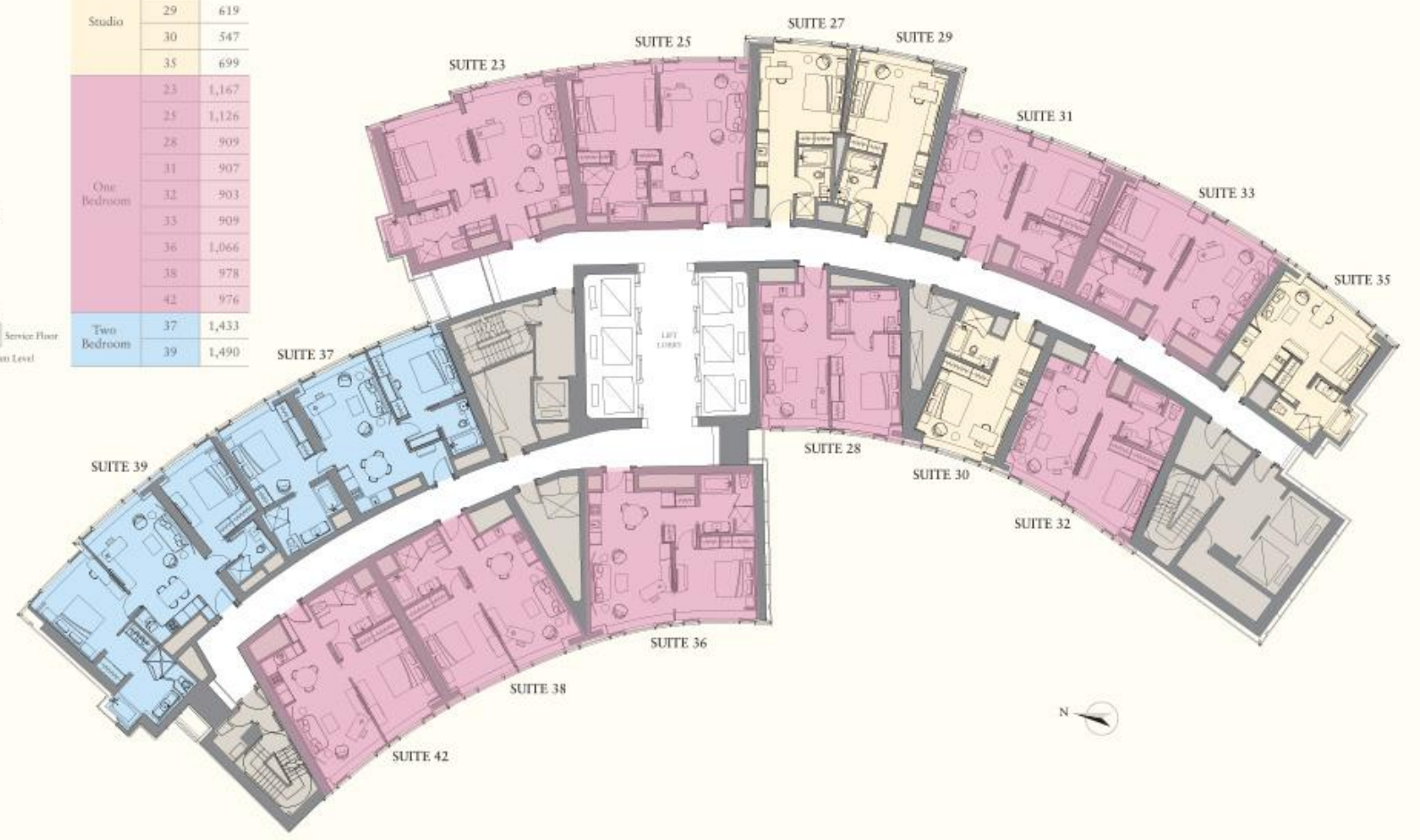
- 280 Guestrooms & Suites
- Prime Location
- First Four Seasons along the Harbor

Section Plan



Suite Size (Gross)

Suite	sq ft
27	620
29	619
30	547
35	699
23	1,167
25	1,126
28	909
31	907
32	903
33	909
36	1,066
38	978
42	976
37	1,433
39	1,490



FOUR SEASONS HONG KONG RESIDENCES

- 280 Guestrooms & Suites
- Prime Location
- First Four Seasons along the Harbor



KOWLOON SHANGRILA HONG KONG

- 680 Guestrooms & Suites
- Prime Location
- Classic Iconic Flagship



KOWLOON SHANGRILA HONG KONG

- 680 Guestrooms & Suites
- Prime Location
- Classic Iconic Flagship



KOWLOON SHANGRILA HONG KONG

- 680 Guestrooms & Suites
- Prime Location
- Classic Iconic Flagship



GRAND HYATT KUALA LUMPUR, MALAYSIA

- 426 Guestrooms & Suites
- Prime Location
- Sky Lobby
- Innovative LCG Glass in Rooms
- Central Bath and Shower



GRAND HYATT KUALA LUMPUR, MALAYSIA

- 426 Guestrooms & Suites
- Prime Location
- Sky Lobby
- Innovative LCG Glass in Rooms
- Central Bath and Shower



FOUR SEASONS MUMBAI, INDIA

- One and only Four Seasons Flagship Brand in India
- All Suites
- Grand Ballroom
- Famous Award-Winning Rooftop overlooking Mumbai Worli Area



HYATT REGENCY, DAXING BEIJING, PRC

- 200 Rooms
- 5 F&B Outlets
- Modern and Streamlined
- Business Hotel near newest Airport in Beijing Area
- Subtle Chinese Approach



TOPO DESIGN STUDIO
Singapore/Australia/Maldives



Rowena Berroya

Partner

Registered Architect (Phils.)

SINGAPORE 120 Lower Delta Rd, #11-01 Cendex Center, Singapore 169208

AUSTRALIA PO Box 296 Portarlington Australia 3223, +61 405 483 212

MALDIVES +960 750 1982

RGBA DESIGN LTD.

Hong Kong

HONG KONG

Room 50, Yuk Chiu Bldg.

No. 50 Hollywood Road,

Central, Hong Kong

Phone: +852 91285508

Email: rberroya0307@gmail.com

Email 2: rowena.atienza@gmail.com

Website: www.rgbadesign.com