



**RGBA DESIGN LTD.**  
Hong Kong - Manila

Singapore-Melbourne-Bangkok-Maldives





## RGBA DESIGN LTD – TOPO DESIGN

**RGBA Design Ltd** is a boutique studio specializing in custom Architecture and Interiors for top Hospitality and Private Residential & Commercial Projects.

It has a diverse portfolio ranging from 6-star Destination Resorts, Business Hotels, and large- and small-scale Private Residences throughout The Philippines, Thailand, India and other parts of Asia.

RGBA is known for its personalized service and hands-on dedication to each project. Since its formation in early 2020, it has acquired a large high-end Sustainable Resort in El Nido, Philippines that is currently in its planning stages and the 50 Storey first Pullman Hotel in Manila.

**TOPO DESIGN** is a studio spearheaded by leading Designers and Architects of some of the world's most luxurious Hotels and Resorts, specializing in Master Planning, Exterior Architecture, and Landscape. In collaboration with RGBA, it covers a one stop Consultancy Service that can streamline the various Phases from Inception to Construction stages.

Both Offices have main offices in Hong Kong, Melbourne and Singapore with satellite branches in Bangkok and Maldives.





## ROWENA GUEVARA BERROYA FOUNDER – PARTNER

Rowena is in the Architecture and Hospitality Design Industry for more than 2 decades. She has worked with a well known International Interior Design Company as a Partner (21 years) hence have collaborated with top Operators – Hyatt International, Four Seasons, Shangri-la, Marriott International throughout The Philippines, Hong Kong, China, Japan, Sri Lanka, Malaysia and India.

She has been in charge of all stages from presentation preparation, design concepts, design development to project and team management.

Rowena is a Registered Licensed Architect in the Philippines and is an affiliate member of the Philippine Institute of Architects and United Architects of the Philippines.

## Past Projects with BLD – LEAD DESIGNER

### COMPLETED PROJECTS (1998-2020)

#### HOTELS

Huating Kunlun Hotel Shanghai (renovation),  
China  
Hyatt Regency, Shipai, China  
Courtyard Marriott , Nerul, India  
Grand Hyatt Manila, Philippines  
Grand Hyatt Manila Extension, Philippines  
Grand Hyatt Colombo, Sri Lanka  
Four Seasons Mumbai, India  
Four Seasons Residences Beijing, China  
Four Seasons Serviced Apartments, Hong  
Kong

Grand Hyatt Kuala Lumpur, Malaysia  
Grand Hyatt Hong Kong  
Grand Hyatt Shanghai, China  
Grand Hyatt Beijing, China  
Grand Hyatt Fukuoka, Japan  
Grand Hyatt Melbourne, Australia  
Hyatt Regency Pune, India  
Hyatt Regency Mumbai, India  
Hyatt Regency Delhi, India  
Hyatt Regency Manila, Philippines

J Hotel, Shanghai, China  
Shangri-La Kowloon, Hong Kong  
Shangri-la Pudong Shanghai, China  
Ritz-Carlton Bachelor Gulch, Colorado  
Portman Ritz-Carlton Shanghai  
Park Lane, Hong Kong (now Pullman)





## GRAND HYATT MANILA PHILIPPINES

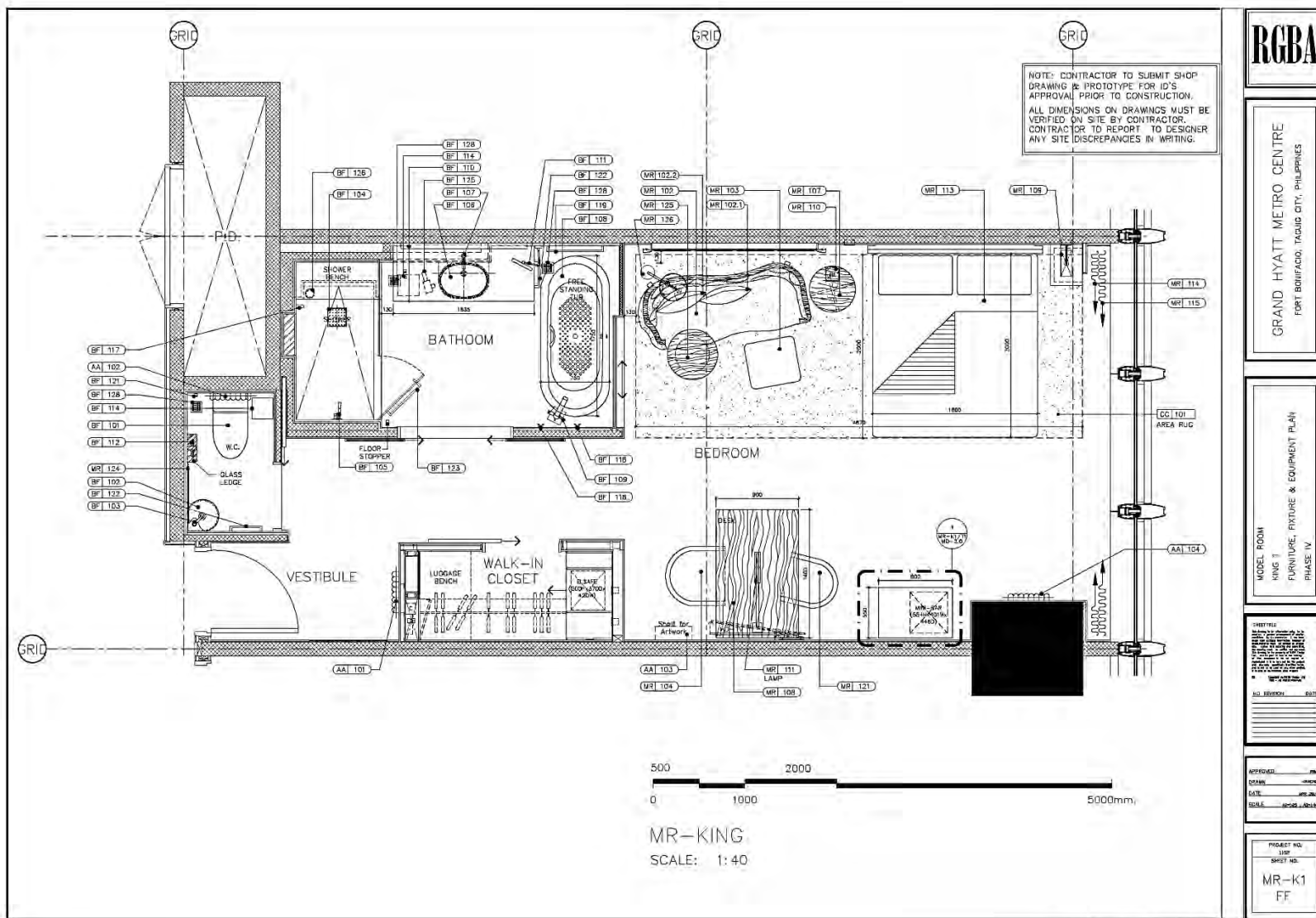
- 486 Guestrooms & Suites
- 11-Meter-Tall Lobby
- Tallest Building in the Philippines
- Innovative F&B
- Award Winning Design





## GRAND HYATT MANILA PHILIPPINES

- 486 Guestrooms & Suites
- 11-Meter-Tall Lobby
- Tallest Building in the Philippines
- Innovative F&B
- Award Winning Design



DRAWING IN PROGRESS - MAY 2015

## GRAND HYATT MANILA PHILIPPINES

- 486 Guestrooms & Suites
- Separate Water Closet
- Walk in Closet
- Defined Lounge, Bed & Desk Areas
- Award Winning Design







## **GRAND HYATT MANILA PHILIPPINES**

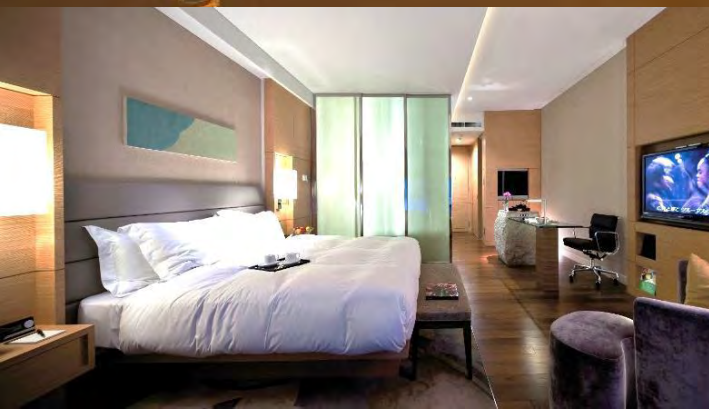
- 486 Guestrooms & Suites
- Dormitory Concept
- His and Hers Wet Areas
- Walk in Closet
- Award Winning Design





## OSAKA INTERCONTINENTAL

- 200 Guestrooms & Suites
- One of the Largest Rooms in Japan with a minimum of 52 M2 for Standard Guestrooms
- Consistent Award-Winning Design
- Focused on Local Culture & Art Collection

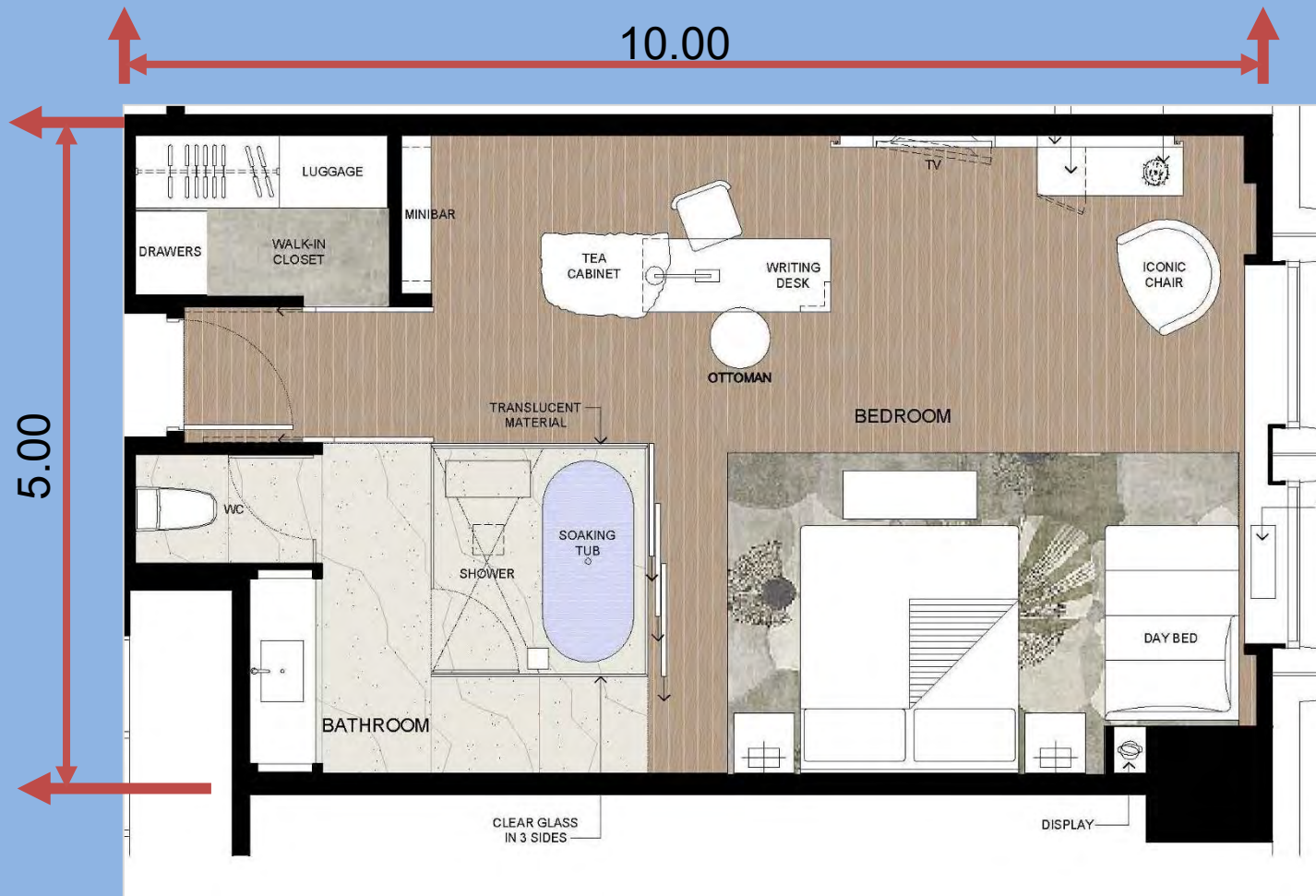


INTERCONTINENTAL<sup>®</sup>  
OSAKA

A NEW  
PERSPECTIVE  
ON LUXURY







## OSAKA INTERCONTINENTAL

- 200 Guestrooms & Suites
- One of the Largest Rooms in Japan with a minimum of 52 M2 for Standard Guestrooms
- Consistent Award-Winning Design
- Focused on Local Culture & Art Collection



## **OSAKA INTERCONTINENTAL**

- 200 Guestrooms & Suites
- One of the Largest Rooms in Japan with a minimum of 52 M2 for Standard Guestrooms
- Consistent Award-Winning Design
- Focused on Local Culture & Art Collection



## **GRAND HYATT KUALA LUMPUR, MALAYSIA**

- 426 Guestrooms & Suites
- Prime Location
- Sky Lobby
- Innovative LCG Glass in Rooms
- Central Bath and Shower





## GRAND HYATT KUALA LUMPUR, MALAYSIA

- 426 Guestrooms & Suites
- Prime Location
- Sky Lobby
- Innovative LCG Glass in Rooms
- Central Bath and Shower



## FOUR SEASONS MUMBAI, INDIA

- One and only Four Seasons Flagship Brand in India
- All Suites
- Grand Ballroom
- Famous Award-Winning Rooftop overlooking Mumbai Worli Area





HYATT  
REGENCY, DAXING  
BEIJING, PRC

- 200 Rooms
- 5 F&B Outlets
- Modern and Streamlined
- Business Hotel near newest Airport in Beijing Area
- Subtle Chinese Approach





## J HOTEL SHANGHAI, PRC

- All Suite Hotel
- Tallest Hotel in The World
- Grand Lobby
- Top End Fixtures
- Government Owned
- Super High Luxury

# ONGOING PROJECTS

## HOTELS

### **Grand Summit NUSTAR Cebu (Opening 2026)**

- 370 keys modern urban resort hotel

### **Mandarin Oriental Macau GYM Renovation (Opening 2025)**

### **Pullman Manila, Greenhills, Philippines (Opening 2026) – now DUSIT**

- 200 keys modern urban hotel

### **SOMERSET Gorordo Cebu – All Day Dining/Deli (Opening 2026)**

### **Courtyard Marriott Hotel, Navi, India (2023)**

- 150 Guestrooms

## RESORTS

### **Niyama Maldives (2023) – Renovation**

### **Amingiri, Maldives (2022)**

### **Maldives VAADHOO Vegan Wellness Hotel, Maldives (2025)**

### **Fushifaru Maldives (2022) - Renovation**

### **Naisoso Marina Apartments, Fji (2022) - Renovation**

### **Six Star Sustainable Private Island Resort Palawan, El Nido, Philippines (2021)**

- 80 private luxurious villas

### **Modala Resort Cliff Villas & Restaurant, Panglao, Bohol, Philippines (2024)**

- 16 Sustainable Villas

## PRIVATE RESIDENCES & RESTAURANTS

### **Bunwana Mansion & Spa, Korat, Thailand (2024)**

### **KESTER HAW Condominium, Rockwell, Philippines**

3Bedroom Luxury Condo

### **TONY QUACH Mansion, Fuego, Philippines**

5000 M2 Private Residence – Renovation

### **V HOTEL Renovation, Makati, Philippines**

50 Room Business Hotel

### **ELITE UNION MAIN OFFICES, BGC Philippines**

### **Monocrete Chinese Restaurant, The Upper Deck, Ortigas, Philippines**

### **KASPAR ERNST Private Villas, Phuket, Thailand**

70,000 sq ft Private Residence

### **Gwandalan House Hotel B&B, Dipolog, Philippines (2022)**

<https://www.gwandalanhouse.ph/>



# INSPIRATION: BLACK LOTUS – A Symbol **STRENGTH** of Purity

INSPIRATION



NOTE: This is preferred  
by MO



# INSPIRATION: BLACK LOTUS – A Symbol STRENGTH, Purity and Renewal

NOTE: This is preferred by MO

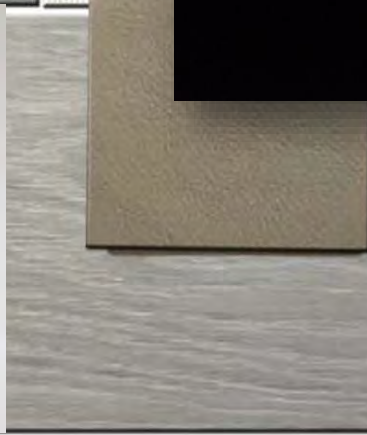
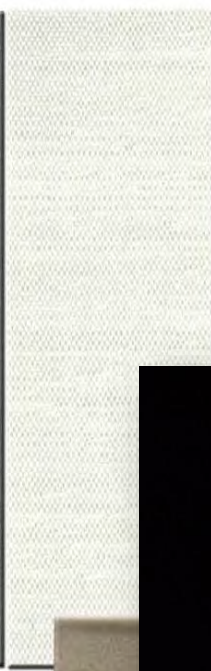
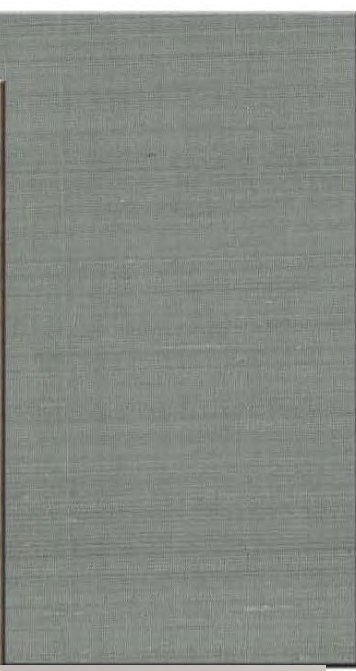


The LOTUS commonly serves as a sacred for purity, rebirth, and strength. Because lotuses rise from the mud without stains, they are often viewed as a symbol of purity. Since they return to the murky water each evening and open their blooms at the break of day, lotus flowers are also symbols of strength, resilience, and rebirth. Still another lotus flower meaning is transcendence: the lotus represents the transcending of man's spirit over worldly matter since it blooms from the underworld into the light.

INSPIRATION

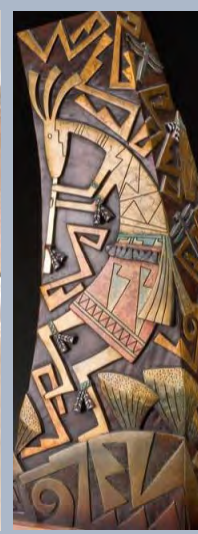
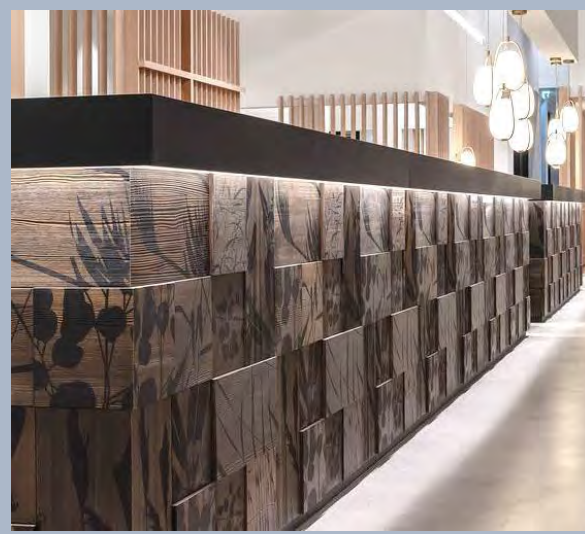
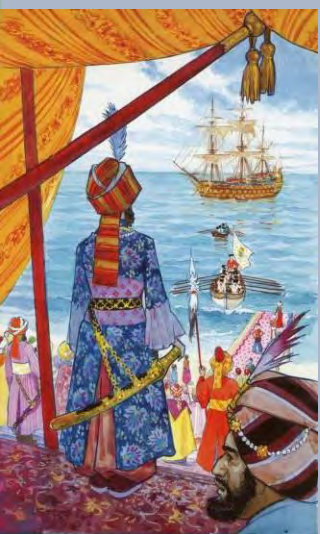


# FINISHES



This is approved by MO



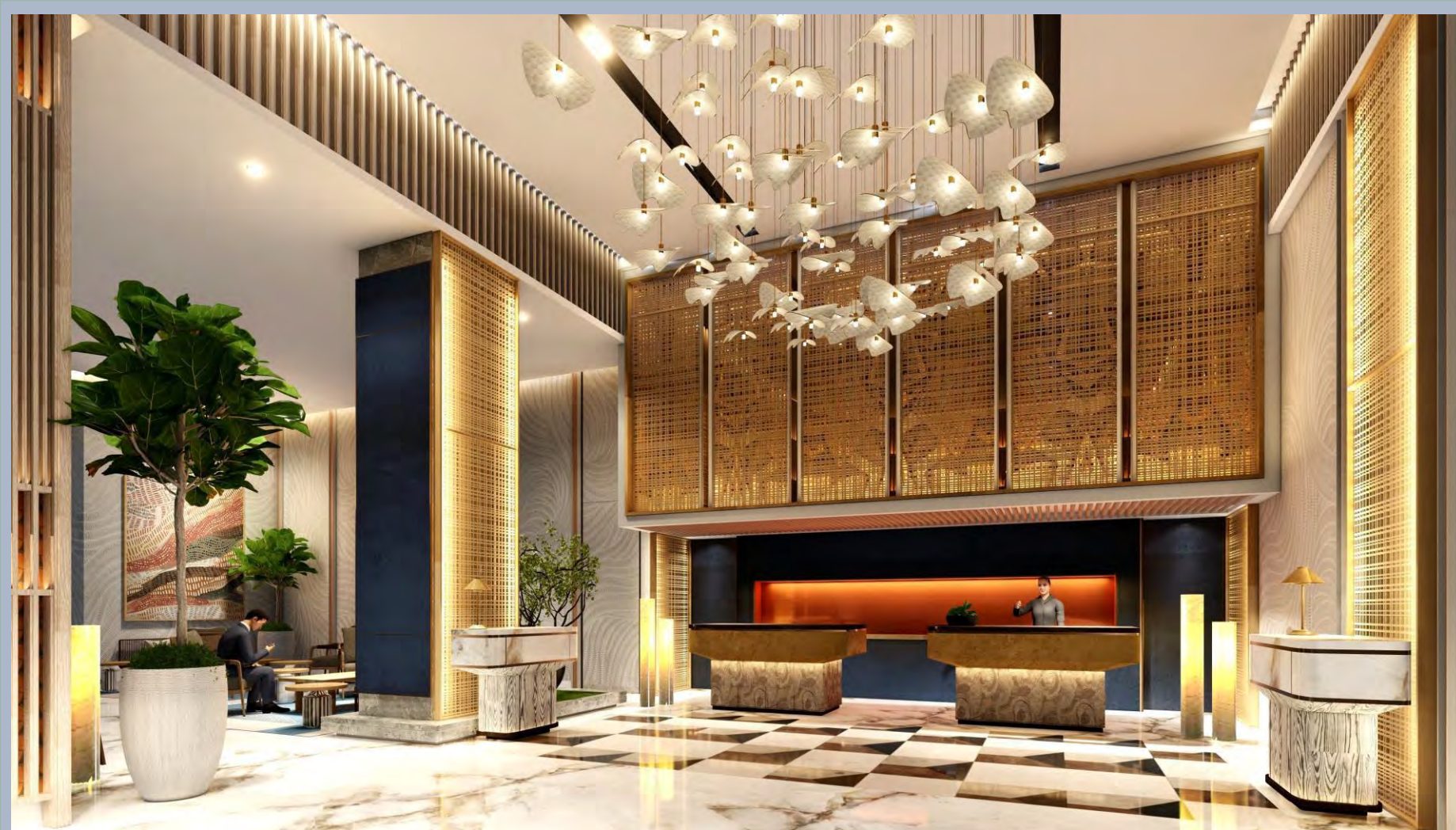


## NUSTAR GRAND SUMMIT CEBU, PHILIPPINES

- 370 KEYS
- 20 storeys
- Young and Locally Inspired
- In House Robinsons Premier Brand







## NUSTAR GRAND SUMMIT CEBU, PHILIPPINES

- 370 KEYS
- 20 storeys
- Young and Locally Inspired
- In House Robinsons Premier Brand





## NUSTAR GRAND SUMMIT CEBU, PHILIPPINES

- 370 KEYS
- 20 storeys
- Young and Locally Inspired
- In House Robinsons Premier Brand





## NUSTAR GRAND SUMMIT CEBU, PHILIPPINES

- 370 KEYS
- 20 storeys
- Young and Locally Inspired
- In House Robinsons Premier Brand



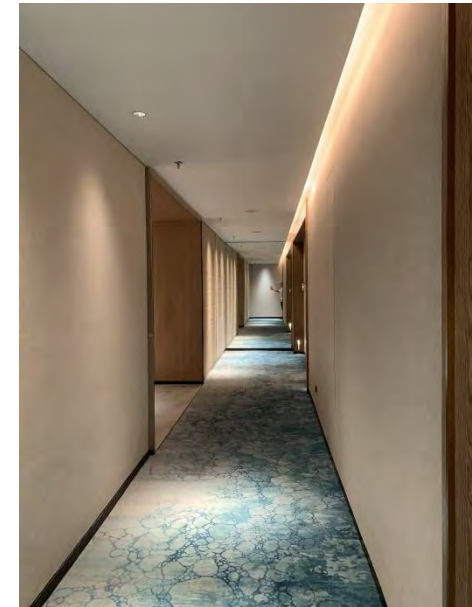
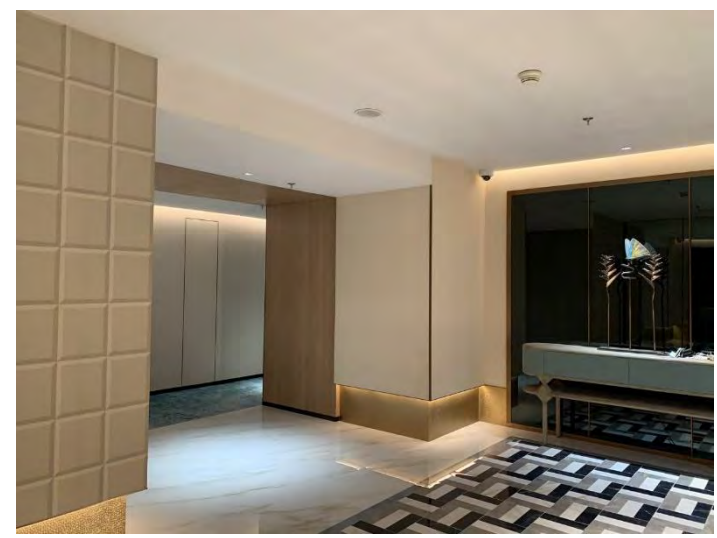
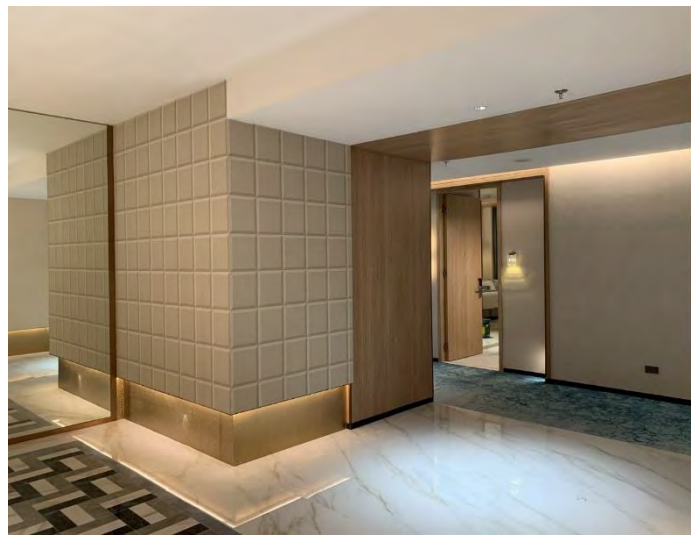
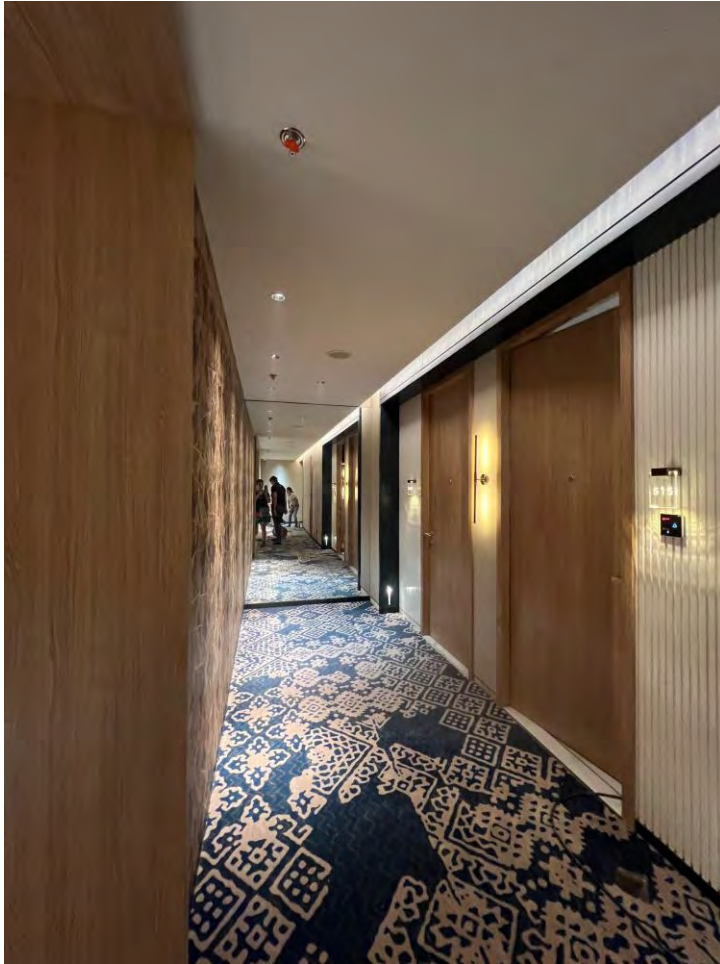


## NUSTAR GRAND SUMMIT CEBU, PHILIPPINES

- 370 KEYS
- 20 storeys
- Young and Locally Inspired
- In House Robinsons Premier Brand



APPROVED



CORRIDOR - PHOTOS



APPROVED



KING MOCK UP - PHOTOS



# ICONIC SKYDECK:

## EXPERIENCE THE JOURNEY OF APEX HEIGHTS .....



### ICONIC SKYDECK NUSTAR GRAND SUMMIT CEBU, PHILIPPINES

- Major Attraction in Cebu
- Futuristic
- Unique Feature





## ICONIC SKYDECK NUSTAR GRAND SUMMIT CEBU, PHILIPPINES

- Major Attraction in Cebu
- Futuristic
- Unique Feature



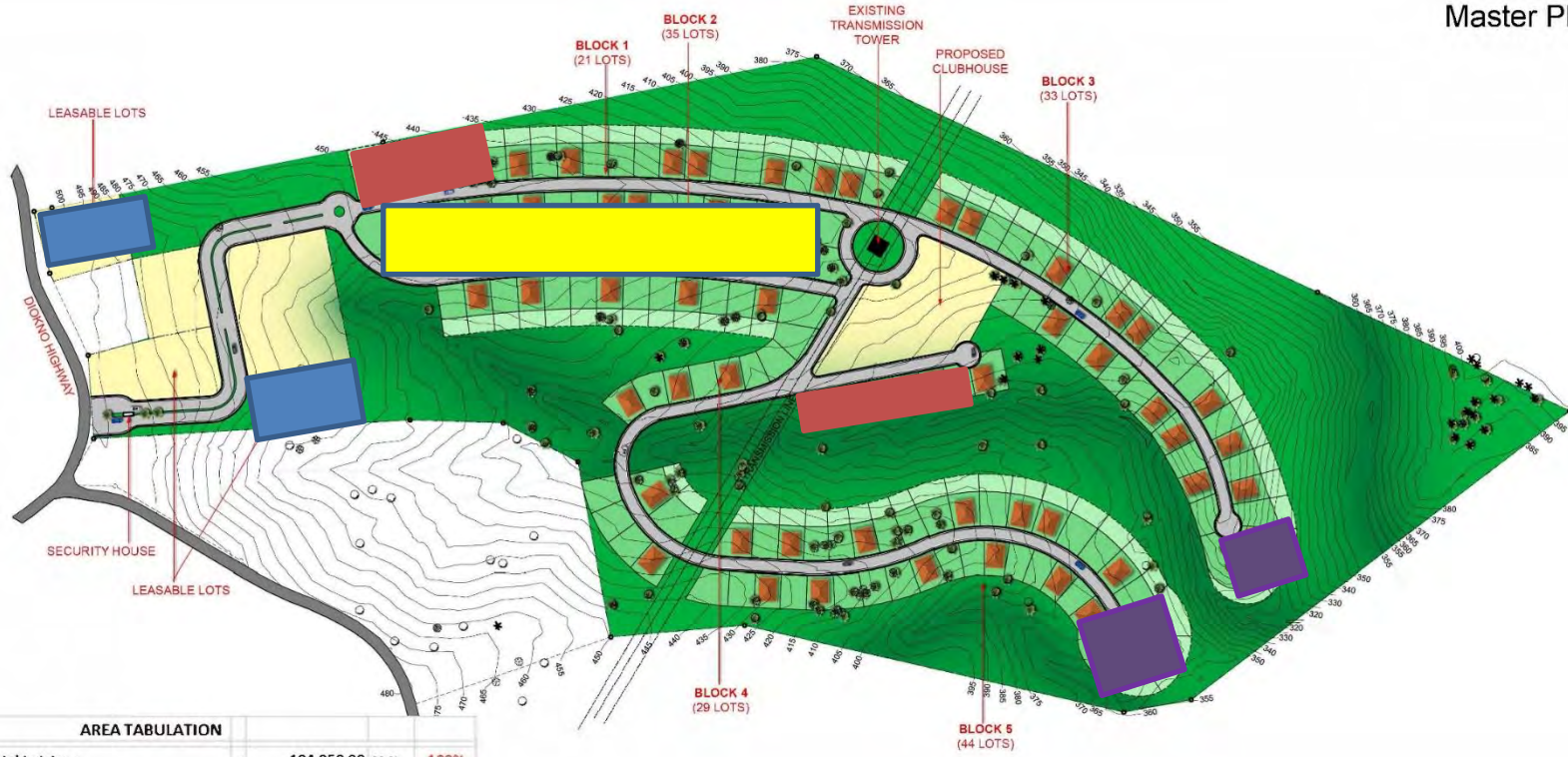


## ICONIC SKYDECK NUSTAR GRAND SUMMIT CEBU, PHILIPPINES

- Major Attraction in Cebu
- Futuristic
- Unique Feature



## Master Plan



## LAUREL RIDGE BATANGAS, PHILIPPINES

- 18 HECTARES
- Mixed Use
- Retail/Commercial/Hotel
- Residential
- High and Medium Rise
- Young and Artsy



**RGBA DESIGN LTD.**  
Hong Kong - Manila

### AREA TABULATION

	Total Lot Area	=	184,850.00 sqm	100%
1.0	Road Area	=	17,600.00 sqm	9.52%
2.0	Leasable Land Areas (Approx.)			
a.	leasable lot 1	=	2,517.00 sqm	
b.	leasable lot 2	=	1,758.00 sqm	
c.	leasable lot 3	=	1,962.00 sqm	
d.	leasable lot 4	=	6,687.00 sqm	
e.	Clubhouse land area	=	4,680.00 sqm	
	sub-total	=	17,604.00 sqm	9.52%
3.0	Saleable Land Areas (Approx.)			
a.	Block 1 (21 lots)	=	9,485.00 sqm	
b.	Block 2 (35 lots)	=	10,950.00 sqm	
c.	Block 3 (33 lots)	=	14,180.00 sqm	
d.	Block 4 (29 lots)	=	11,190.00 sqm	
e.	Block 5 (44 lots)	=	18,135.00 sqm	
	sub-total	=	63,940.00 sqm	34.59%
4.0	Void Area	=	85,706.00	46.37%





# LAUREL RIDGE BATANGAS, PHILIPPINES

- 18 HECTARES
- Mixed Use
- Retail/Commercial/Hotel
- Residential
- High and Medium Rise
- Young and Artsy

Mid Rise

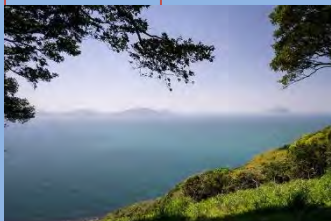
Town Homes

Luxury Homes



Entrance

Hotel



View to Balayan Bay

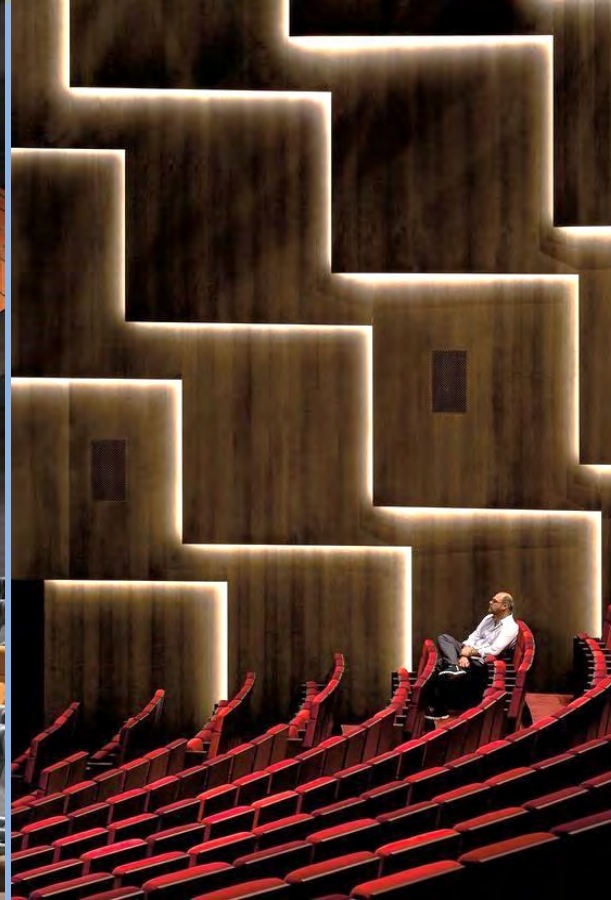
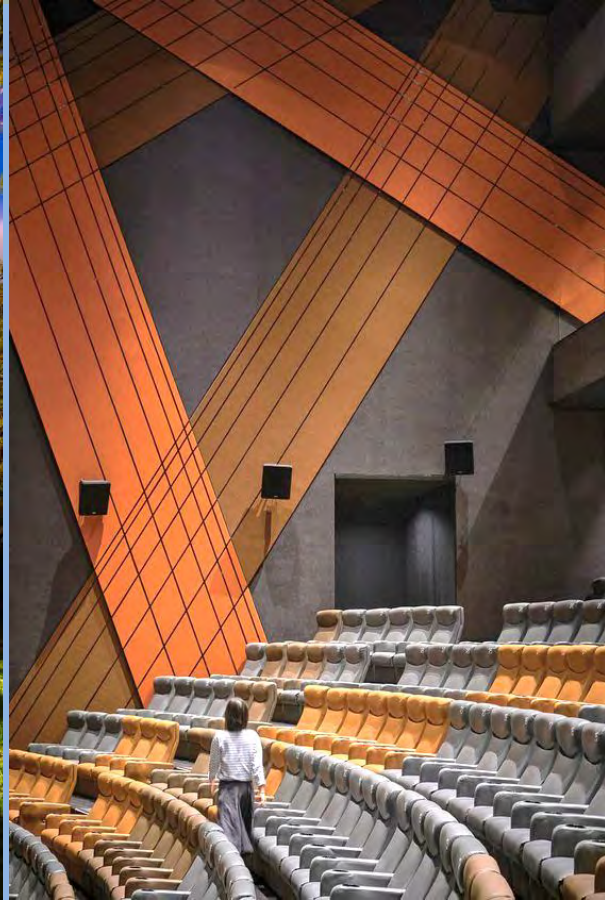


Low Rise



View to Taal Lake





## LAUREL RIDGE BATANGAS, PHILIPPINES

- 18 HECTARES
- Mixed Use
- Retail/Commercial/Hotel
- Residential
- High and Medium Rise
- Young and Artsy





## LAUREL RIDGE BATANGAS, PHILIPPINES

- 18 HECTARES
- Mixed Use
- Retail/Commercial/Hotel
- Residential
- High and Medium Rise
- Young and Artsy





## THE KOWLOON HONG KONG MALL

- 18 HECTARES
- Mixed Use
- Retail/Commercial/Hotel
- Residential
- High and Medium Rise
- Young and Artsy

**RGBA DESIGN LTD.**  
Hong Kong - Manila



# 絕佳地段

The Perfect Landmark

The Kowloon 位處尖沙咀漆咸道旁，位於市中心地帶，交通便捷。鄰近多達19個停車場，只需步行十分鐘即可到達。

Situated at Chatham Rd, the KOWLOON boasts a prestigious location with convenient access; over 19 car parks in the areas, reaching the mall just steps away.



## THE KOWLOON HONG KONG MALL

- 18 HECTARES
- Mixed Use
- Retail/Commercial/Hotel
- Residential
- High and Medium Rise
- Young and Artsy

RGBA DESIGN LTD.

Hong Kong - Manila



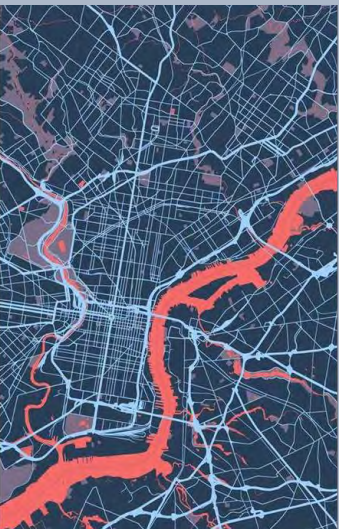
## THE KOWLOON HONG KONG MALL

- 18 HECTARES
- Mixed Use
- Retail/Commercial/Hotel
- Residential
- High and Medium Rise
- Young and Artsy



**RGBA DESIGN LTD.**  
Hong Kong - Manila





## PULLMAN MANILA, PHILIPPINES

- 200 KEYS
- 50 storeys
- Tallest Building in Greenhills
- Young and Artsy







## PULLMAN MANILA, PHILIPPINES

- 200 KEYS
- 50 storeys
- Tallest Building in Greenhills
- Young and Artsy
- Sky Lobby





## PULLMAN MANILA, PHILIPPINES

- 200 KEYS
- 50 storeys
- Tallest Building in Greenhills
- Young and Artsy





## PULLMAN MANILA, PHILIPPINES

- 200 KEYS
- 50 storeys
- Tallest Building in Greenhills
- Young and Artsy





## PULLMAN MANILA, PHILIPPINES

- 200 KEYS
- 50 storeys
- Tallest Building in Greenhills
- Young and Artsy





## MAD COW STEAK HOUSE PULLMAN MANILA

- 200 KEYS
- 50 storeys
- Tallest Building in Greenhills
- Young and Artsy
- In House Accor Brand





## MAD COW STEAK HOUSE PULLMAN MANILA

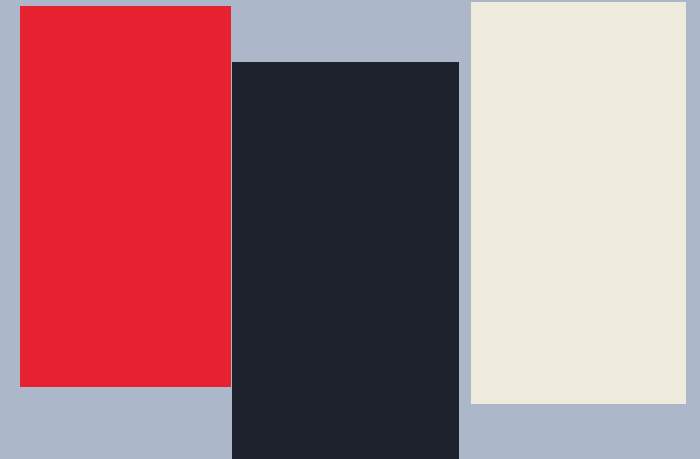
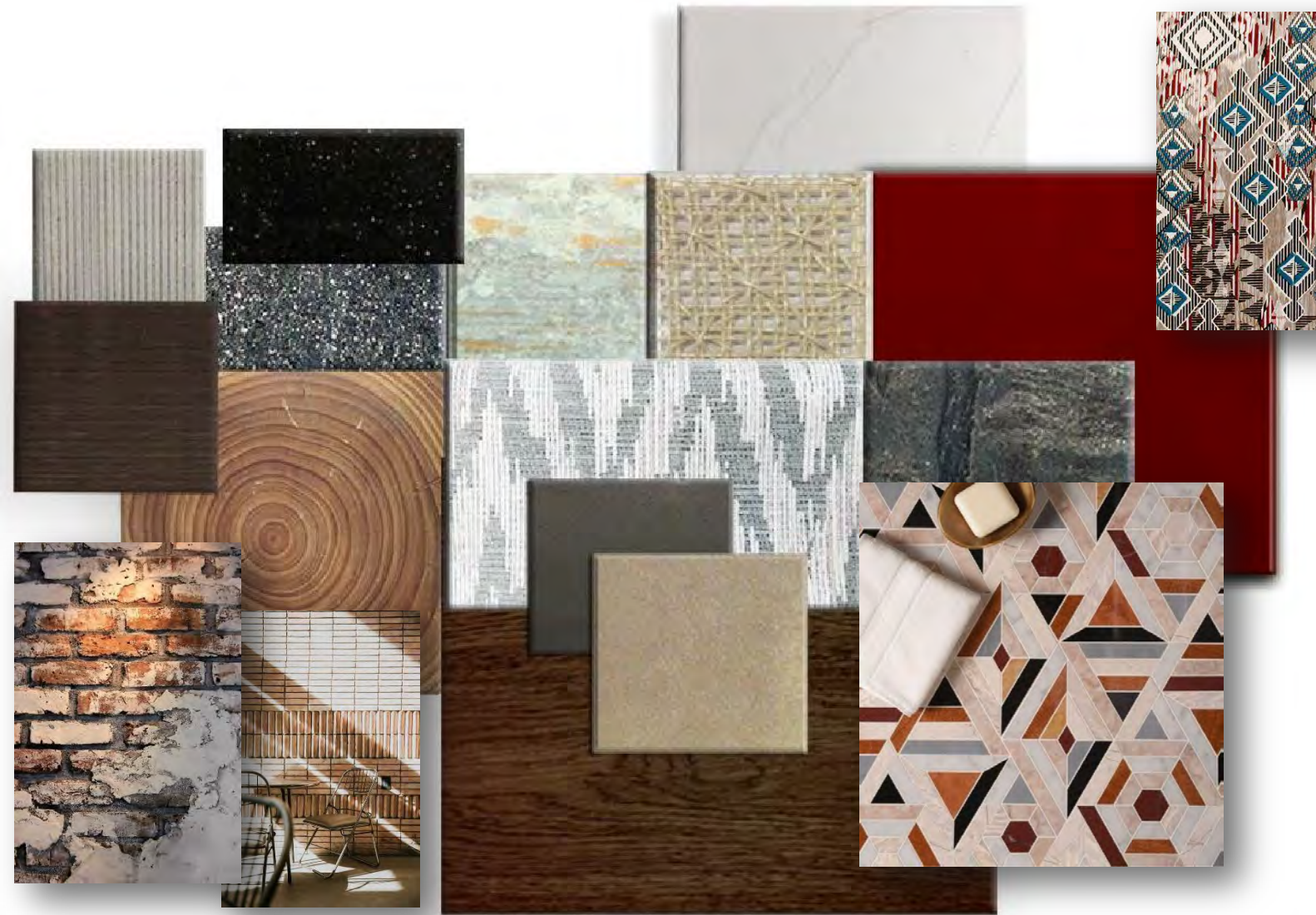
- 200 KEYS
- 50 storeys
- Tallest Building in Greenhills
- Young and Artsy
- In House Accor Brand





**MAD COW STEAK  
HOUSE**  
PULLMAN MANILA

- 200 KEYS
- 50 storeys
- Tallest Building in Greenhills
- Young and Artsy
- In House Accor Brand







## KHAO YAI THAILAND PRIVATE RESORT

- 2600 SQUARE METERS
- Mountain Retreat
- Sustainable Design
- Yoga and Wellness
- Private Villas

**RGBA DESIGN LTD.**

Hong Kong/Manila





KHAO YAI  
THAILAND  
PRIVATE RESORT

- 2600 SQUARE METERS
- Mountain Retreat
- Sustainable Design
- Yoga and Wellness
- Private Villas

**RGBA DESIGN LTD.**

Hong Kong/Manila





## KHAO YAI THAILAND PRIVATE RESORT

- 2600 SQUARE METERS
- Mountain Retreat
- Sustainable Design
- Yoga and Wellness
- Private Villas

**RGBA DESIGN LTD.**

Hong Kong/Manila





## KHAO YAI THAILAND PRIVATE RESORT

- 2600 SQUARE METERS
- Mountain Retreat
- Sustainable Design
- Yoga and Wellness
- Private Villas



RGBA DESIGN LTD.

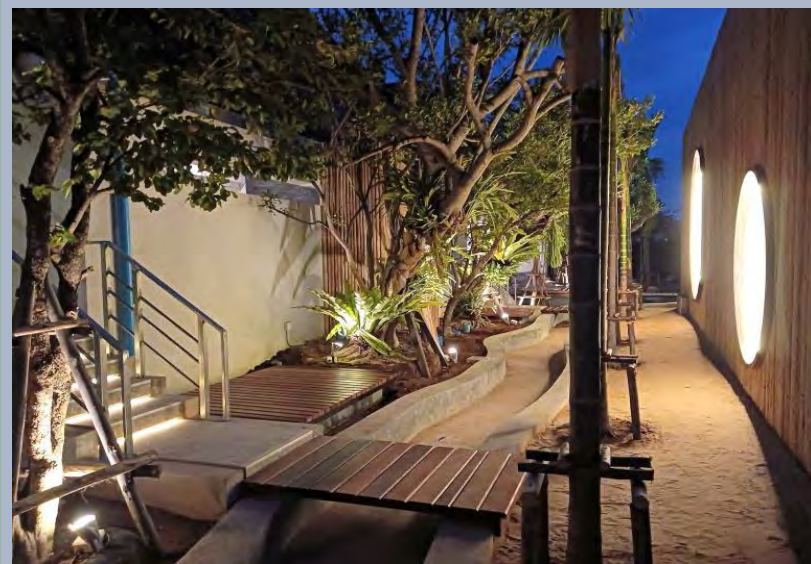
Hong Kong/Manila





## KHAO YAI THAILAND PRIVATE RESORT

- 2600 SQUARE METERS
- Mountain Retreat
- Sustainable Design
- Yoga and Wellness
- Private Villas



RGBA DESIGN LTD.

Hong Kong/Manila





## FIVE STAR VEGAN WELLNESS RESORT VAADHOO, MALDIVES

- 70 Luxury Villas
- Private Tip Land
- 900 Meters White Sand Beach
- Vegan Living
- Sustainable Design
- Innovative
- Wellness Focused





## FIVE STAR VEGAN WELLNESS RESORT VAADHOO, MALDIVES

- 70 Luxury Villas
- Private Tip Land
- 900 Meters White Sand Beach
- Vegan Living
- Sustainable Design
- Innovative
- Wellness Focused





## FIVE STAR VEGAN WELLNESS RESORT VAADHOO, MALDIVES

- 70 Luxury Villas
- Private Tip Land
- 900 Meters White Sand Beach
- Vegan Living
- Sustainable Design
- Innovative
- Wellness Focused





## FIVE STAR VEGAN WELLNESS RESORT VAADHOO, MALDIVES

- 70 Luxury Villas
- Private Tip Land
- 900 Meters White Sand Beach
- Vegan Living
- Sustainable Design
- Innovative
- Wellness Focused





## FIVE STAR VEGAN WELLNESS RESORT VAADHOO, MALDIVES

- 70 Luxury Villas
- Private Tip Land
- 900 Meters White Sand Beach
- Vegan Living
- Sustainable Design
- Innovative
- Wellness Focused





## AURO FARM CACAO RESERVE CALAMBA, PHILIPPINES

- 7 Luxury Villas
- All zero waste Construction
- Organic and Sustainable Materials
- First Bio Pool in the Country
- Cacao Sanctuary





AURO FARM  
CACAO RESERVE  
CALAMBA,  
PHILIPPINES

- 7 Luxury Villas
- All zero waste Construction
- Organic and Sustainable Materials
- First Bio Pool in the Country
- Cacao Sanctuary





## AURO FARM CACAO RESERVE

- 7 Luxury Villas
- All zero waste Construction
- Organic and Sustainable Materials
- Bio Pool
- Cacao Sanctuary





AURO FARM  
CACAO RESERVE  
CALAMBA,  
PHILIPPINES

- 7 Luxury Villas
- All zero waste Construction
- Organic and Sustainable Materials
- Bio Pool
- Cacao Sanctuary





COURTYRAD  
MARRIOTT  
NAVI, MUMBAI,  
INDIA

- 105 Guestrooms
- Business Hotel
- 6 Floors of Podium
- Large Ballroom
- Concierge
- Young & Modern Design





COURTYRAD  
MARRIOTT  
NAVI, MUMBAI,  
INDIA

- 105 Guestrooms
- Business Hotel
- 6 Floors of Podium
- Large Ballroom
- Concierge
- Young & Modern Design

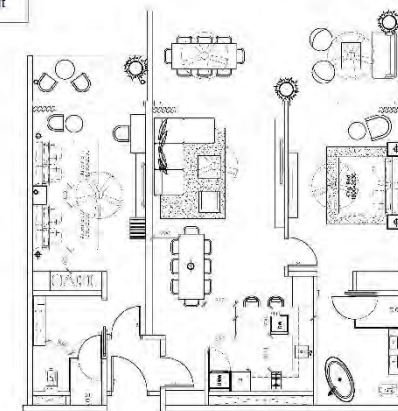




## NAISOSO MARINA FIJI

- 60 Luxury Apartments & Condominium
- 900 Meters White Sand Beach
- Sustainable Design
- Innovative
- Modern Indigenous

2022-07-29 2BR  
Apartment Layout







## NAISOSO MARINA FIJI

- 60 Luxury Apartments & Condominium
- 900 Meters White Sand Beach
- Sustainable Design
- Innovative
- Modern Indigenous





ERNST PRIVATE  
VILLA  
PHUKET,  
THAILAND

- 7 Luxury Villas
- Private Land by the sea
- Millionaires' Row
- 36 Meter Pool
- Private Kitchen





## ERNST PRIVATE VILLA PHUKET, THAILAND

- 7 Luxury Villas
- Private Land by the sea
- Millionaires' Row
- 36 Meter Pool
- Private Kitchen







ERNST PRIVATE  
VILLA  
PHUKET,  
THAILAND

- 7 Luxury Villas
- Private Land by the sea
- Millionaires' Row
- 36 Meter Pool
- Private Kitchen





ERNST PRIVATE  
VILLA  
PHUKET,  
THAILAND

- 7 Luxury Villas
- Private Land by the sea
- Millionaires' Row
- 36 Meter Pool
- Private Kitchen





**FIVE STAR  
MODALA RESORT  
PANGLAO,  
BOHOL,  
PHILIPPINES**

- 20 Luxury Villas
- Private Tip Land
- 800 Meters White Sand Beach
- Marine Sanctuary
- Coral Reserve
- Sustainable Design
- Innovative
- Wellness Focused



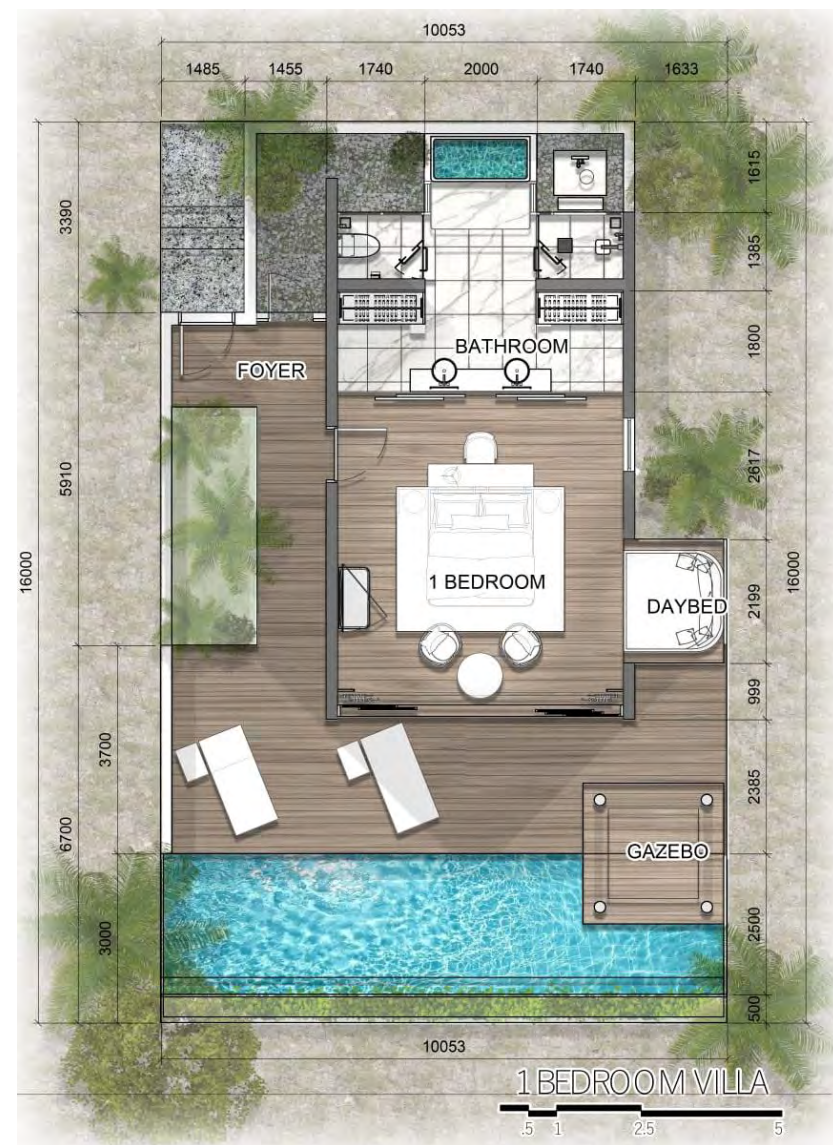


FIVE STAR  
MODALA RESORT  
PANGLAO,  
BOHOL,  
PHILIPPINES

- 20 Luxury Villas
- Private Tip Land
- 800 Meters White Sand Beach
- Marine Sanctuary
- Coral Reserve
- Sustainable Design
- Innovative
- Wellness Focused



# MODALA VILLA - RENDERINGS





# MODALA VILLA – ACTUAL PHOTOS







FIVE STAR  
MODALA RESORT  
PANGLAO,  
BOHOL,  
PHILIPPINES

- 20 Luxury Villas
- Private Tip Land
- 800 Meters White Sand Beach
- Marine Sanctuary
- Coral Reserve
- Sustainable Design
- Innovative
- Wellness Focused





FIVE STAR  
MODALA RESORT  
PANGLAO,  
BOHOL,  
PHILIPPINES

- 20 Luxury Villas
- Private Tip Land
- 800 Meters White Sand Beach
- Marine Sanctuary
- Coral Reserve
- Sustainable Design
- Innovative
- Wellness Focused





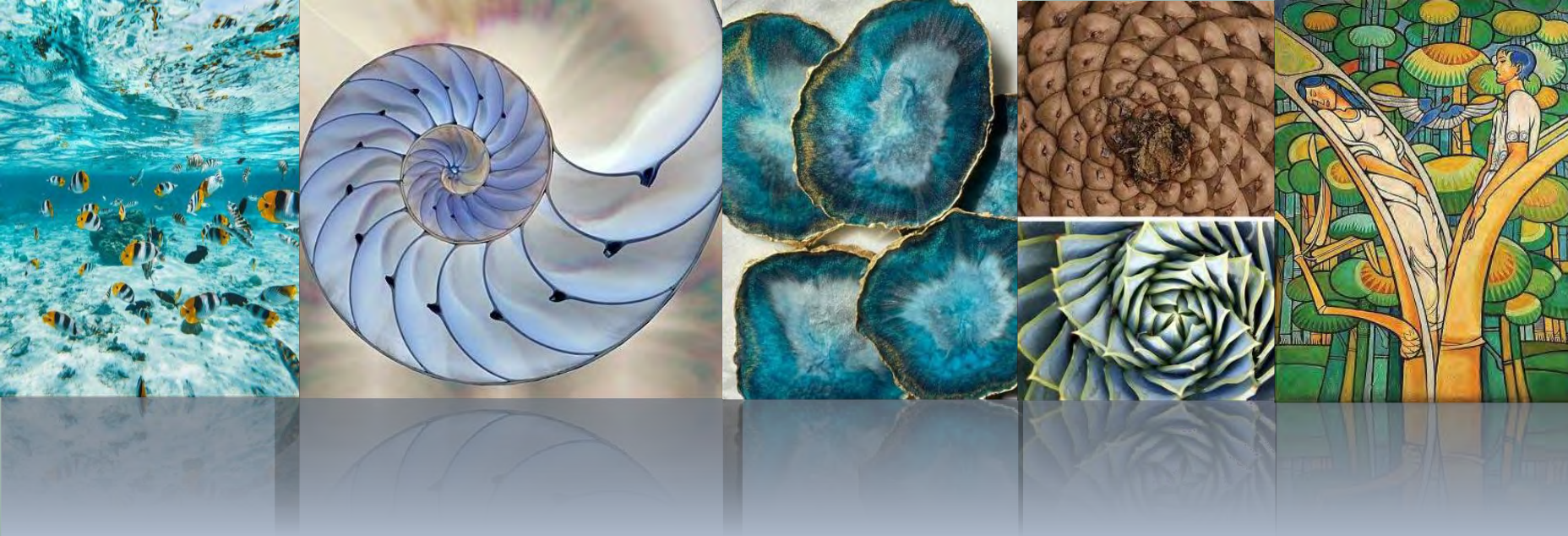
MODALA VILLA – ACTUAL PHOTOS



# MODALA VILLA - RENDERINGS







## SIX STAR RESORT PALAWAN

- 80 Luxury Villas
- Private Island
- 600 Meters White Sand Beach
- Marine Sanctuary
- Coral Reserve
- Sustainable Design
- Innovative
- Wellness Focused





## UNDISCLOSED SIX STAR RESORT PALAWAN

- 80 Luxury Villas
- Private Island
- 600 Meters White Sand Beach
- Marine Sanctuary
- Coral Reserve
- Sustainable Design
- Innovative
- Wellness Focused





## UNDISCLOSED SIX STAR RESORT PALAWAN

- 80 Luxury Villas
- Private Island
- 600 Meters White Sand Beach
- Marine Sanctuary
- Coral Reserve
- Sustainable Design
- Innovative
- Wellness Focused



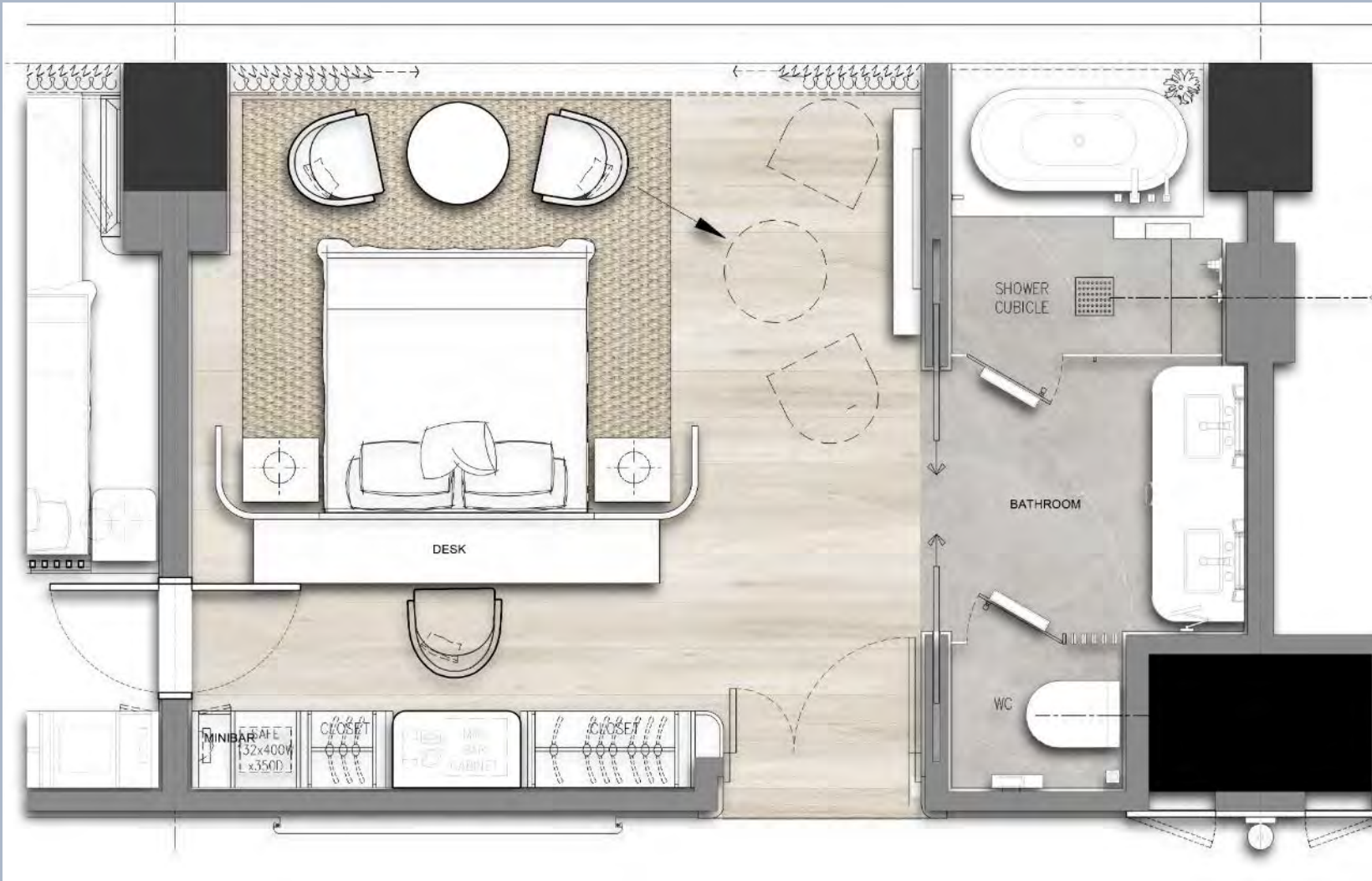


## UNDISCLOSED SIX STAR RESORT PALAWAN

- 80 Luxury Villas
- Private Island
- 600 Meters White Sand Beach
- Marine Sanctuary
- Coral Reserve
- Sustainable Design
- Innovative
- Wellness Focused



# GUESTROOMS LAYOUT 2



ANGLE

FEATHER  
S



# GUESTROOMS – VOLUME STUDY



GRAND HYATT IGATPURI  
DESIGN INSPIRATION

**RGBA DESIGN LTD.**  
Hong Kong/Manila



# INSPIRATION: ROYAL LUXURY



GUESTROOMS

GRAND HYATT IGATPURI  
DESIGN INSPIRATION

**RGBA DESIGN LTD.**  
Hong Kong/Manila





## ELITE UNION FLAGSHIP OFFICE BGC, MANILA

- Prime Office Space at the heart of BGC, Manila
- Ultra Modern & High Tech
- State of the Art IT Systems
- Owner's Private Office Hub





KESTER HAW  
CONDO,  
ROCKWELL,  
MANILA

- 3 Bedroom Condominium
- Modern and Masculine
- Prime Residential Development
- High End Luxury





Rowena Berroya

Partner

Registered Architect (Phils.)

**RGBA DESIGN LTD.**

**Hong Kong**

**HONG KONG**

Room 50, Yuk Chiu Bldg.

No. 50 Hollywood Road,

Central, Hong Kong

Phone: +852 91285508

Email: [rberroya0307@gmail.com](mailto:rberroya0307@gmail.com)

Email 2: [rowena.atienza@gmail.com](mailto:rowena.atienza@gmail.com)

Website: [www.rgbadesign.com](http://www.rgbadesign.com)



**TOPO DESIGN STUDIO**  
Singapore/Australia/Maldives

**SINGAPORE** 120 Lower Delta Rd, #11-01 Cendex Center, Singapore 169208

**AUSTRALIA** PO Box 296 Portarlington Australia 3223, +61 405 483 212

**MALDIVES** +960 750 1982